







Your ANGEL Personal Home Page


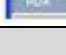
PERSONAL HOME PAGE

Once you have logged into ANGEL, your personal home page will appear. Here you will see a list of the courses you are enrolled in, either as an instructor or as a student, and a variety of other tools. This page can be customized in a variety of ways. On the left edge of the page is the Power Strip. Several navigation tools are located here.

POWER STRIP

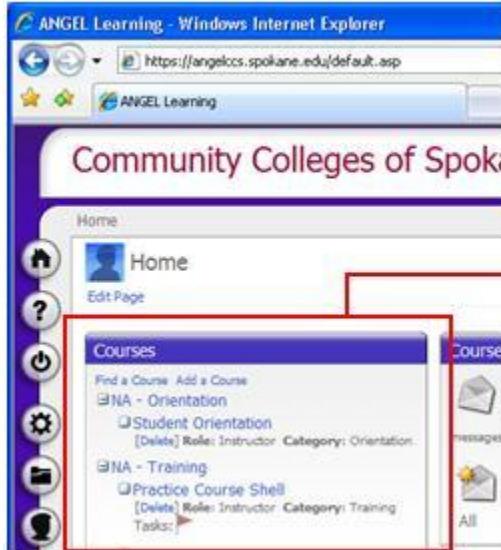


| Icon | Description |
|---|---|
|  | Returns you to your home page from anywhere in ANGEL |
|  | Links you to ANGEL help guides and resources |
|  | Logs you out of ANGEL |
|  | Your Learning Object Repository (LOR); an online storage area for reusable learning objects |
|  | Customize your settings, such as personal information, your password, and ANGEL theme |
|  | Opens ANGEL instant messenger |

| | |
|---|---|
|  | 508 - Create or import an accessibility profile that meets your needs for accessing course material |
|  | PDA - Activates ANGEL in PDA mode |

COURSES NUGGET

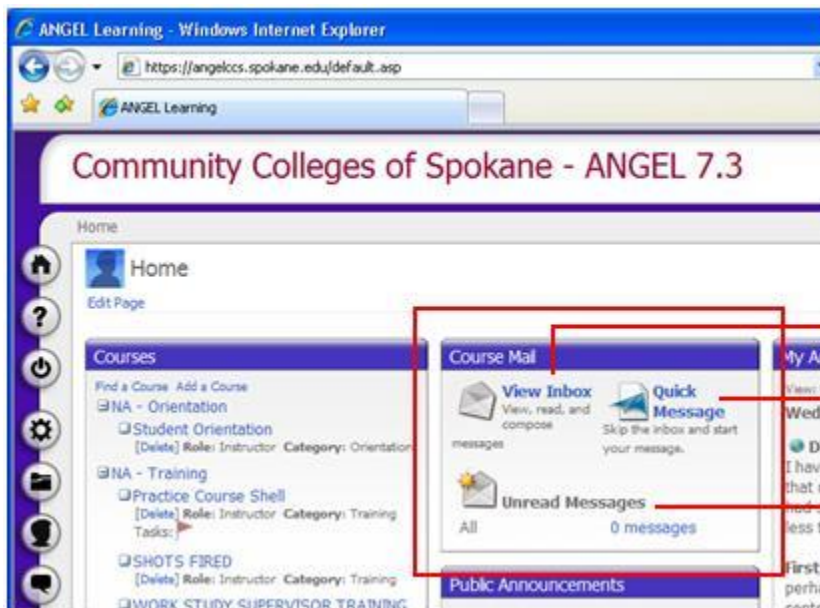
The Courses nugget lists all courses you are enrolled in, either as an instructor or as a student. (For additional information on changing the display settings for this list, see the instructions for “Changing Course Display.”)



The Courses nugget lists all courses you are enrolled in, either as an instructor or as a student. To access a course, click the course name.

COURSE MAIL

The Course Mail nugget allows you to exchange mail messages with other ANGEL users. (For additional information, see the instructions for “Using Course Mail.”)



View Inbox - shows all messages in your inbox

Quick Message - bypass the inbox and start composing a message

Unread Messages - displays the number of unread messages in your inbox